

# Gratitude REPORT



BECAUSE OF YOU!

 Mary Immaculate  
Health/Care Services

A Member of Covenant Health



## Hug Holiday Sends Bubbles and Hugs to Those We've Lost

No matter how much time has passed since you last hugged a special person, the warmth and comfort of that touch is a precious memory. This is especially true for those loved ones we have lost and can no longer physically embrace. For the first time, we celebrated Hug Holiday on June 29. Thoughtful donors sent in donations in memory of their loved ones. Our residents and staff blew bubbles together to symbolize the sending of hugs and kisses to family and friends who have passed. The residents loved every minute of it and the event was enjoyed by all!

“We were fortunate to have our bubble activity follow our weekly Mass, where we called to mind these loved ones in our Prayer of the Faithful,” says Adrienne Cullen, director of mission integration.

**“Staff and residents truly embraced the opportunity to send hugs and bubbles to their loved ones who had passed. There was a wonderful sense of joy and presence in this sacred ritual. We look forward to next year’s celebration.”**



We were honored to remember family and friends who have passed, and with your help, we can show our employees how much they are appreciated for their commitment to our residents. Donations will be used for employee recognition initiatives such as appreciation gifts and activities, recognition activities, bonuses, and emergency assistance funds. Your gift will help us lift the spirits of our employees, especially during a time when many are working long and unpredictable hours, often prioritizing the care of our residents over their own personal lives.





First row, seated: Patricia Wentzell, Mary Mee, Peter Mee  
Back row: Margaret Mee Shaheen, Gerald Mee, Daniel Mee,  
John Mee, Kathleen Mee Burokas, Patricia Mee Marvin

## Meet Patricia Mee Marvin

My mother, Mary, was in the professional and loving care of Mary Immaculate for over six years. It did not take me long to understand the challenges the community faces every day to maintain its high quality of care for residents. This was especially true during the pandemic, when staffing issues and the health and welfare of the entire MI community were concerns to all.

My mother was an amazing woman and an inspiration not only to her eight children, but also to her adopted family at MI. She shared touching relationships with many staff members, some of whom even came to her for counsel and to introduce their boyfriends. In her 103 years of life, she always found a purpose for living even though she sometimes questioned why she was living so long.

On many occasions, when my visit with my mother was coming to an end, she would say, “Go home now and take care of the others; I’ll manage.” It was only after my mom’s passing that I came to recognize it was MI that enabled my mother to manage her life with dignity until her death in 2022. **What motivates me to continue to contribute to MI was not only the great care she received, but also her directive to take care of “the others.” I interpreted that to mean my family and friends as well as the Mary Immaculate community.**

MI is a faith-based community. You can see it and even can feel it when you enter through the front doors. This aspect of MI’s mission is uniquely its own. It is an honor to be associated with MI and its Mission. I have complete trust that MI will use its resources where they are needed most. In memory of my mom, I will strive to keep faith with and take care of “the others.”

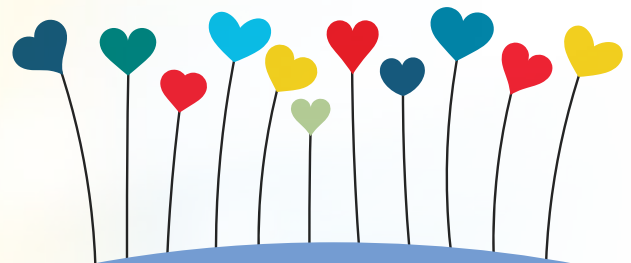
## Completion of Short-Stay Unit Upgrades

We are excited to announce the completion of upgrades to our short-stay rehabilitation unit. Our new unit now boasts large and bright private rooms that include a TV and telephone, a homelike color scheme, and a spacious day room with a TV and piano. Patients in the unit have access to the gym on our first floor or they can get therapy in their private rooms. They can also grab a snack or a book, 24 hours a day.

“We looked at our previous unit and evaluated the patterns and colors. We decided to go with new paint colors that are calmer and brighter,” says Kathy Sicard, LPN, nurse manager. **“When you enter the unit, it evokes the feelings you get after it’s been winter for a long time and suddenly the sun comes out to shine.”**

“You can’t build a new unit without having an exemplary team,” says Saima Nabi, program manager. We have a well-rounded team with LPNs, NPs, an OT, a PT, doctors, psychiatrists, a dedicated social worker, a Parkinson’s specialist, a wound doctor and a geriatric clinical therapist.

**“Every staff member meets every new resident within the first two days of their stay,” says Sicard. “We ask them what they expect from us, and we share what services we offer. It’s important to treat residents with respect and dignity while they heal. Our team does just that by being dedicated to a person-centered approach.”**



**BECAUSE OF YOU!**



## Memory Care That Brings Dignity and Pride

Rebecca Alfonso, program director of memory care, is a Certified Montessori Dementia Care Professional. The Montessori model does not dictate what memory care residents' activities will be on a certain day. Instead, residents are encouraged to decide — and they like that. Activity options often include reading, matching socks, coloring, flower arranging and more.

Recently, a new activity option, Tovertafel, has been added to offer even more choice to our residents. This interactive technology is mounted in the ceiling and projects activities onto a table below. It offers programs for all levels of cognitive ability, including simple sensory options such as butterflies landing on residents' hands to more difficult interactions such as sorting, puzzles and word games.

**“At MI, we offer our residents meaningful activities that align with their remaining skills and abilities,” says Alfonso. “This helps residents successfully complete tasks and enjoy a sense of self-confidence, dignity and pride. As a result, more residents are engaged in programs and are better connected with staff, family and other residents — and laughter and fun have replaced silence and boredom on our unit.”**

The exemplary care and experience at Mary Immaculate's memory care unit has made it an in-demand location for care. Thanks to significant support from our local community, we are excited to be expanding our memory care unit to respond to a growing need. We also want to extend a special thank-you to the Mary Immaculate Guild for its largest gift ever — \$10,000 — in support of the expansion. In addition, we are honored to share we are the recipients of a Cummings Foundation grant of \$225,000, which allowed us to purchase the Tovertafel technology.

What's more, this grant will allow us to increase our activities staff and support programming for the expanded unit. **“We are deeply grateful to the MI Guild and Cummings Foundation for bolstering our ability to effectively care for this population and enhance both the resident and family member experience,” says Gerry Foley, president and CEO.**

Learn more about the Memory Care Unit and all it has to offer in our newest video posted at [mihcs.org/care-services/memory-care/](https://mihcs.org/care-services/memory-care/).



To see the Tovertafel in action, visit <https://youtu.be/RIK53oFgymys?si=aSn3ljgksFt6P9wM>.



(L to R) Susan Oldrid, Director, Resource and Strategy Development, Mary Immaculate, Joyce Vyriotes, Executive Director, Cummings Foundation, Rebecca Alfonso, Program Manager, Memory Care Unit, Mary Immaculate

MI joined 150 other local non-profits to celebrate its award of \$225,000 through Cummings Foundation's major annual \$30 million grants program. MI was selected from 630 applicants during a competitive review process. Woburn-based Cummings Foundation, Inc. was established in 1986 by Joyce and Bill Cummings of Winchester, MA and has grown to be one of the largest private foundations in New England. The Foundation directly operates its own charitable subsidiaries, including New Horizons retirement communities, in Marlborough and Woburn, and Cummings Health Sciences, LLC.

**Additional information is available at [www.CummingsFoundation.org](http://www.CummingsFoundation.org).**



**To view footage of the Cummings Celebration, visit: [www.youtube.com/watch?v=Yk16AGuT8kl](https://www.youtube.com/watch?v=Yk16AGuT8kl)**

## Believers in Compassionate Care

Your gifts support the delivery of high-quality, compassionate care for our residents. We recognize these donors who made a gift between **Sept. 1, 2022, and Aug. 15, 2023**. Every effort has been made to ensure the accuracy of our donor lists. If you have corrections or would like to change how we publish your name(s), please contact Denise Marques at 508.617.3402 or [dmarques@covh.org](mailto:dmarques@covh.org).

### **Humanitarians \$50,000+** Cummings Foundation

### **Benefactors \$10,000-\$24,999**

Artemas W. Stearns Trust  
Josephine G. Russell Trust  
Mary Immaculate Guild Δ ☆  
Xaverian Brothers Generalate

### **Partners \$5,000-\$9,999**

Dawn and James Mahoney  
Patel Charitable Trust

### **Chairman's Society \$2,500-\$4,999**

Margaret and Peter Shaheen Δ

### **President's Council \$1,000-\$2,499**

Daniel and Judith Bourque Δ  
Catherine McCarthy  
Memorial Trust  
Desroche & Wood Families Δ  
Roger Desjardins  
Essex Companies LLC  
Margaret Finn  
Jackson Lumber & Millwork  
Jacobs Family Charitable Trust  
John Newman Δ  
Jane Walsh

### **Samaritans \$500-\$999**

The Family of Pauline F. Burns  
Jaye Gowans Δ  
Grey Nuns Charities Inc.  
Steve and Cissy Grubbs Δ  
William Gurry Δ  
Leonard and Susan Lucas Δ  
Dr. and Mrs. Ron Marvin Δ  
Fred Shaheen Δ

Karen and Keith Sullivan Δ  
Christine Vannett Δ

### **Patrons \$250-\$499**

Laura Berni  
Tom and Agnes Brown  
Jim and Sharon Coskren  
David Electric Contracting Δ  
Eileen Foley and  
Gerard Foley, Esq. Δ  
Susan Kendall  
Donna Pallone  
Marilynn Pisco  
Laurence Rossi, Esq.  
Melissa Shaheen-Bourque  
and David Bourque  
Mike Sinclair  
Lesley Sklar  
Barbara Wall Δ

### **Friends \$1-\$249**

Kenneth and Lynda Anderson  
Anonymous Δ  
Marisa Berni  
Constance Blanks  
Ann and Michael Bova Δ  
Thomas and Eleanor Caffrey Δ  
John and Christine Carco  
Robert Champy Δ  
Paula and David Chisholm  
Donna Christensen  
Commonwealth Motors  
Colleen Delgiodice  
The Blackbaud Giving Fund  
Donahue Brothers Inc. Δ  
Kathy Doyle Δ  
Maryann Doyle  
Richard Dragon

Draper Inc.  
Mike and Pam Durkee  
ECS Companies  
Export Insurance Agency Inc.  
Faith E. Delaney,  
Attorney at Law  
Richard and Ellen Ferrante  
Janet, Greg, Nick and  
Chris Flaherty  
Vicky Forney and  
Stephen Forney, MBA Δ  
Karen Girard  
Patricia Gurry Δ  
Robert Hajjar  
Mary Hamel Δ  
Margaret Hayes Δ  
Andrew and Linda Hildebrandt  
Michele and Paul Howard  
Pam Jackson  
Monica Jaskelevicus  
Russell Karl  
Edward Kelleher  
Ramsis Khalil  
Howard and Paula Kligerman  
Maureen LaRivee Δ  
Mary Lyman  
Janice and Anthony  
Makovitch Δ  
Richard Marvin  
Mercedes Mateo  
Paul McKenna  
Patricia McWalter and  
Maurice McWalter Jr.  
Georgianne Medor  
George Milne  
Missionary Sisters of the  
Society of Mary Inc. Δ

Richard Nawrocki  
Peter Nimerowski Δ  
Tobey and Joseph O'Brien  
James O'Connor Δ  
Karen O'Hara and Friends  
Sheila and James O'Hara  
Susan Oldrid Δ  
Sean O'Leary  
Thomas Perry and  
Michelle Cantara Δ  
Roland Poirier Δ  
Michael and Patricia Powers  
Julie and Gareth Roberts  
Lisa and Neil Rosenberg  
Linda and Paul Sahovey  
Renee Serrano  
Shaheen, Pallone &  
Associates, PC  
Marilyn and Peter Stagg  
Dorothy Sternburg  
Bob Thomas and  
Debbie Kligerman-Thomas  
Susan Totten  
Richard Urell  
Gary Urso  
Teresa Van Buren and  
Henry Sachs  
Chuck and Jill Vorderis  
Robin Walbridge  
Dennis Wamsted  
Rev. William Waters, OSA Δ  
White Street Paint and  
Wallpaper Δ  
John and Sherry Wood  
Claire Wood  
Nancy Woron Δ

Δ Loyalty Society Member: The Loyalty Society recognizes Mary Immaculate's most loyal donors — those who share their generosity for three or more consecutive years. ☆ To see a listing of Mary Immaculate Guild members who contributed to this gift, please read the Mary Immaculate Guild newsletter at [mhcs.org/fall2023-guildnewsletter](http://mhcs.org/fall2023-guildnewsletter)

Thank you

for all you've done!

We hope that this report will convey the difference you have made for our residents and staff this past year. With a grateful heart,

*Susan*

Susan Oldrid, *Director, Resource & Strategy Development*  
[susan\\_oldrid@covenanthealth.net](mailto:susan_oldrid@covenanthealth.net) | 508.728.1843

